

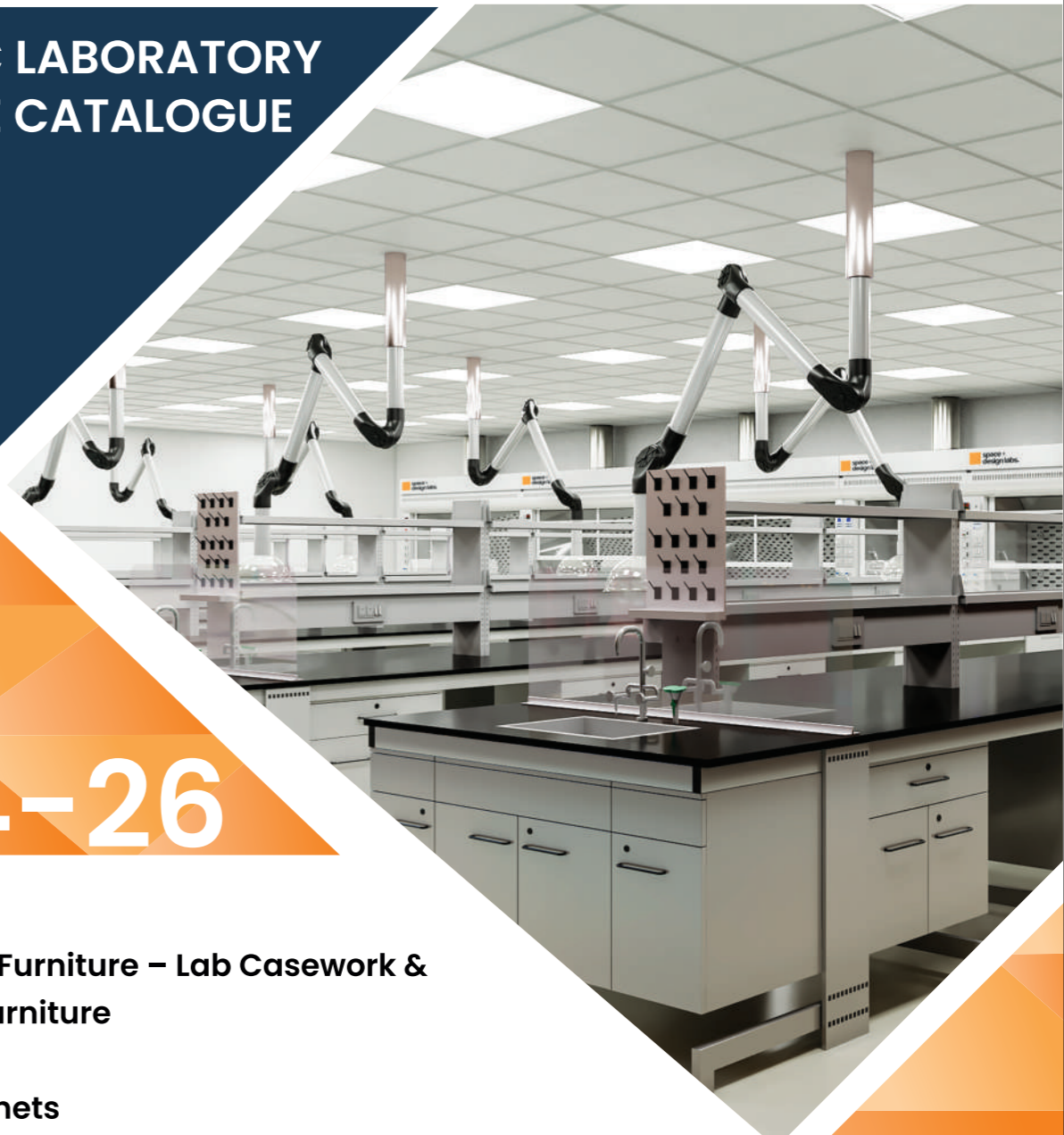


SEFA -1, SEFA - 8M & SEFA - 10
ASHRAE 110 - 2016, EN 14175
ISO 9001 : 2015 ; ISO 14001 : 2015,
ISO 45001 : 2018




Creating environment for scientific excellence

SCIENTIFIC LABORATORY FURNITURE CATALOGUE 2024-26




2024-26

CONTACT US

 3rd Floor, Plot No. 8, Ashoka Marg,
Moti Vihar Lane No. 5, South City -1,
Nr. Mayom Hospital, Gurgaon - 122 001

Factory : H-532(C) RI ICO Industrial Area,
Bhiwadi (Rajasthan) - 301 019

 0124-2579901
98116 62667, 98110 17858

 info@spacedesignindia.com

 www.spacedesignlabs.com

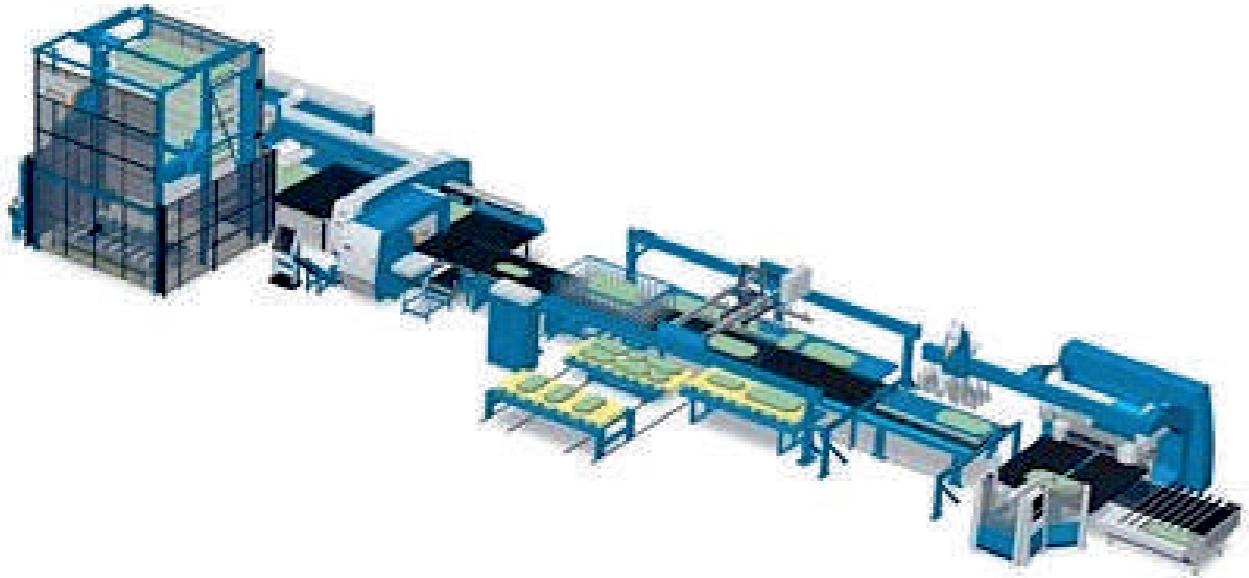


ISO: 9001-2015, ISO:14001-2015
OHSAS 45001-2018, ISO 13485-2016
& Greenguard Certified Company

- Modular Lab Furniture – Lab Casework & Adaptable Furniture
- Fume Hoods
- PP Acid Cabinets
- Spot Extractors & Other Ductables
- Storage Solutions – General purpose, Hazardous & Flammables
- Lab Services for Utilities & Essentials

PRIMA POWER – PSBB LINE

FULLY AUTOMATIC CNC PUNCHING, SHEARING,
BUFFERING & BENDING LINE



STATE-OF-THE ART & MOST ADVANCED FULLY
AUTOMATIC MANUFACTURING PLANT IN BHIWADI (RAJASTHAN)



- In-house fully conveyerised nano technology based powder coating plant with automatic spray phosphating from gema®
- 8 tanks pre-treatment ensures proper 60-70 microns of Powder coating that can pass 1000 hours Salt Spray Test.

TABLE OF CONTENTS

01.	About us – Company Overview	04
02.	Introduction	05
03.	Certifications & Affiliations	06
04.	Range of products -Overview	07
05.	Modular Lab Furniture (Lab Casework & Adaptable Systems)	07-14
	Cleantech: "C" Frame Adaptable System	09
	Collinear: "D" Frame Adaptable System	10
	Endure: Lab Casework -Plinth Based System	11
	Universal: Pedestal System	12
	Sleek: with PP Leg System	13
	Clasp: A low cost -yet fully functional system for Schools	14
06.	Work Table Options	15-16
07.	Fume Hoods & Ductables	17-21
	Fume Hoods	17-18
	Local Spot Extractors	19
	PP Storages	20
	Ventilated Metal Chemical Storages	20
08.	Blowers	21
09.	Counter Top Options	22
09.	Color Options	23
10.	Reagent Racks	24
11.	Gas Distribution & Gas Detection System	25
12.	Electrical Trunking for Power Supply	26
13.	Sinks and Faucets	26
14.	Storages	30-32
15.	Clients	33
16.	Gallery	34-35

COMPANY OVERVIEW



State-of-Art
manufacturing Facility in
BHIWADI (NCR) Rajasthan



International standards
SEFA MEMBERSHIP
SEFA-8M & SEFA-10 TESTED
for LAB FURNITURE
ASHRAE – 110 : 2016 & EN 14175
for FUME HOODS



In-house Testing Lab Facility, for :

- Salt Spray Test (using Salt Spray Chamber) as per ASTM norms
- Gloss Test as per ASTM norms
- Micron Test as per ASTM norms
- Pencil Hardness Test
- Cross Hatching Test
- Bend test



JOURNEY OF SPACE+ DESIGN LABS

2012

Space Design India started its journey of venturing into Modular Lab Furniture with the prestigious order of "CADBURY'S INDIA LIMITED"

2017

Space Design India ventured into its own manufacturing at Bhiwadi, and at the same time was awarded multiple orders of "PATANJALI AYURVED" for its various Labs across all over India

2019

Obtained SEFA-8M and SEFA-10 test certifications, ensuring the highest standards of quality assurance. Also Installed latest CNC Lasers, Welding Robots, Machining centres, etc.

2020

Space Design India, converted to "Space Plus Design Labs Pvt. Ltd.", started manufacturing its very own Fume Hood, got the the design certified as ASHRAE – 110 : 2016 by using the simulation CFD (Computational Fluid Dynamics Test).

2021

Got the state-of-the-art PSBB Line installed and put in place the fully automatic conveyerised Nano Technology based Powder Coating plant, and bagged the prestigious orders of Govt Medical College Kathua, Govt Medical College Dodha Labs

2022

Have Completed back-to-back 5 Medical College Labs, including the prestigious "AMRITA HOSPITAL & MEDICAL COLLEGE, FARIDABAD – Asia's biggest private hospital with 2600 beds" Labs and opened offices in Hyderabad (South India) & Vadodara (West India)



Our fully Knock-down Furniture ensures Low Logistics, Safe Transits and Faster Installations

2023

Got the prestigious SEFA Executive Membership.
Executed Twenty Projects for MDH & Chryso India (Saint Gobain Group)

2024

Got the following Certifications for Fume Hoods
ASHRAE 110 – 2016, EN 14175 & SEFA - 1

2025

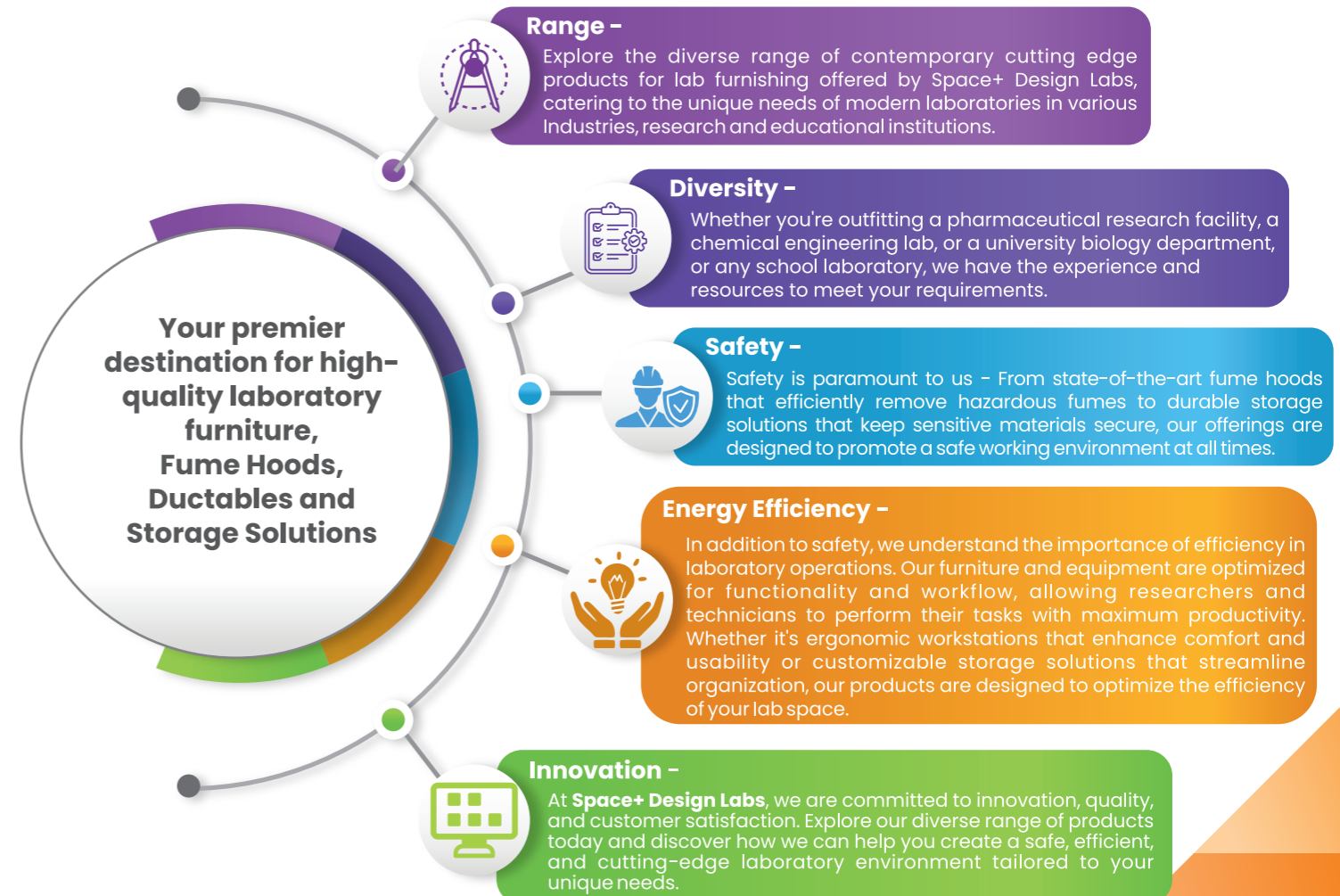
Exports projected to reach 25% of total sales.
Setting up sales partners in Middle East Asia & Africa.
Setup in-house Fume Hood Testing for AM (as manufactured)

INTRODUCTION

CREATING ENVIRONMENT FOR SCIENTIFIC EXCELLENCE



Striving to Build Safe & Efficient Labs



Delivering Pan India....

High Quality, Durable & Economical Lab Furniture with short lead time.



Space Plus Design Lab offers Industry best lead period of 4 weeks.

CERTIFICATIONS & AFFILIATIONS

01



SEFA-8M & SEFA-10
Test certified Compliant
Lab Furniture

02

ASHRAE 110 : 2016

FUME HOOD Test
Certified for ASHRAE
110 – 2016 Standards

03

EN 14175

FUME HOOD Test
Certified for
EN 14175 Standards

04

SEFA - 1

Fume Hood Certified
for meeting SEFA-1,
Listed on SEFA site

05



ISO 9001:2015
ISO 14001:2015
OHSAS 45001 : 2018



LAB FURNITURE

Manufactured as per SEFA-8M & SEFA-10 standards. We do have our furniture TEST CERTIFIED by SEFA approved labs and have SEFA Membership also.



FUME HOODS

Conforming to Internationally accepted Safety Standards for Fume Hoods, ASHRAE 110 and EN 14175, Listed for SEFA - 1, our Fume Hoods ensure protection & safety of Lab Occupants



IN HOUSE TEST FACILITY

For all the Metal Furniture (including Lab Furniture, Fume Hoods, other storages) we have in-house testing facility for Powder Coating tests as per ASTM standards (Salt Spray Test upto 1000 hrs, Paint Thickness, Gloss test, Pencil Hardness, Impact Test, Conical Bend Test, etc.



UTILITY FITTINGS

For Utility fittings, it is ensured that the original manufacturer from where they are sourced, must have in-house testing facilities for pressure check etc. and all other required parameters as per International standards are adhered to.

RESEARCH IS A SERIOUS ENDEAVOR, AND WE TAKE THE FURNITURE USED IN RESEARCH SETTINGS VERY SERIOUSLY

Delivering consistent quality and striving for excellence.

PRODUCTS – THAT COMPLETE YOUR LAB

LAB CASEWORK (MODULAR FURNITURE)



Casework & Adaptable Systems –

Many Options in terms of Furniture Systems, Materials, Heights (Standing/sitting) & Dimensions

FUME HOODS



Chemical Fume Hoods for use in laboratories, that captures, contains, dilute and exhausts harmful fume vapors, gases and nanoparticles efficiently and safely.

SPOT EXTRACTORS



Spot extractors for localised fume exhaust. Essential for the safety of users in open areas of workplace, as they propagate proper ventilation of harmful fumes

METAL STORAGES



Storages that are required for structured and safe accommodation of laboratory equipment, instruments, and administrative effects

PP ACID STORAGES



Polypropylene, one of the most chemical resistant, storages made of strong, aesthetically looking and one of the most sought after materials for storing Acids that are highly corrosive.

LAB UTILITIES, ESSENTIALS & OTHER ACCESSORIES



Ancillary utility equipment required for smooth functioning of laboratories, like Sinks, Faucets, Pegboards, Gas Valves, Power Receptables, Blowers, etc.

MODULAR LAB FURNITURE -

Lab Casework & Adaptable Systems

Explore the diverse range of contemporary cutting edge lab furniture offered by Space+Design Labs, catering to the unique needs of modern laboratories in various Industries, research and educational institutions

"CLEANTECH" C FRAME SYSTEM

A SEFA-10 Certified Adaptable Furniture, that is easy to clean and Internationally acclaimed as one of the best lab Furniture systems based on cantilever mechanism. Independent Structure that holds the granite helps in achieving a better level of Flexibility of re-arrangement at any point of time.

"COLLINEAR" D FRAME SYSTEM

A flexible system with a frontal leg making it more useful when there are high levels of vibrations. Structure in this system, similar to any other adaptable system, holds the complete over-structure on its own, making it highly capable in terms of strength, stability and adaptability.

"ENDURE" PLINTH CASEWORK

SEFA-8M Certified, This heavy duty, most conventional, oldest and versatile Plinth base system, with Toe Space at the bottom, providing a complete closed bottom, makes it very sturdy and can also be fixed to completely close the floor gap.

"UNIVERSAL" PEDESTAL SYSTEM

A robust looking and a very popular furniture system with Base Frame, is floor standing and provides a decent storage space. A Sturdy Direct Floor Connection of the whole system makes it an obvious choice of many Lab users.

"CLASP" LOW COST LC FRAME SYSTEM

A Unique Low Cost System, based on Trimmed Depth "C" Frame, developed by the Research Team of Space+ Design Labs, to cater to the requirement of Schools, who aspire to establish a Modern lab but are looking for something that is cost-efficient. It is comparable to any Standard System in terms of Strength, Elegance, Adaptability and Quality.

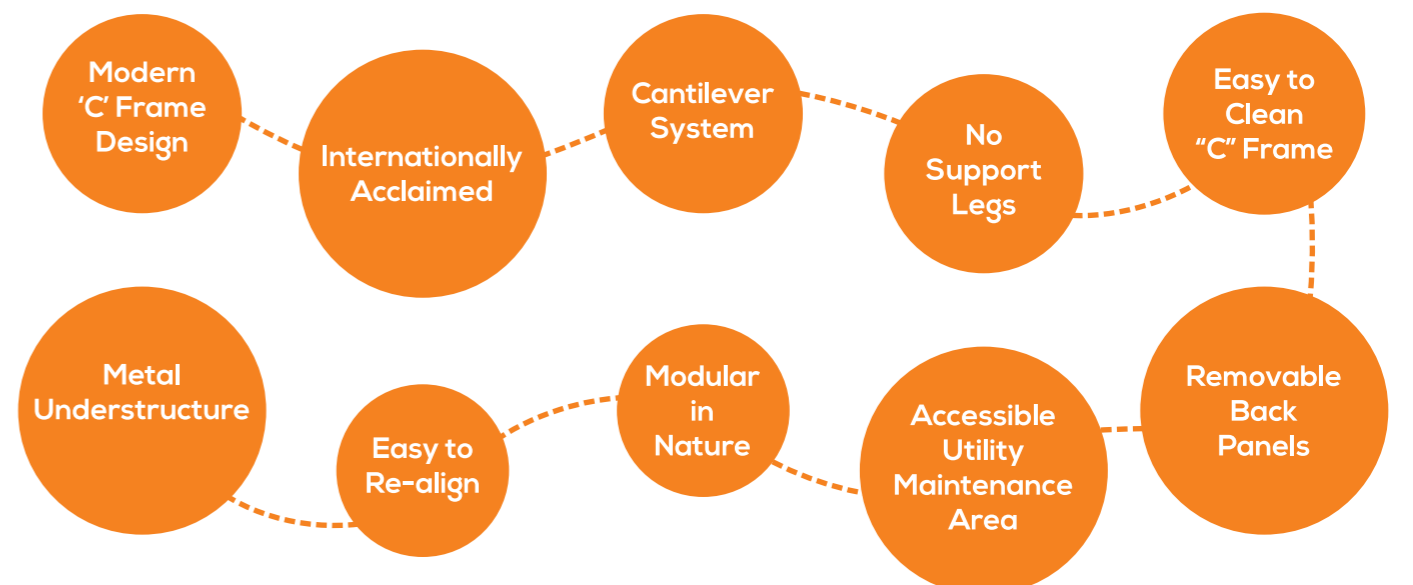
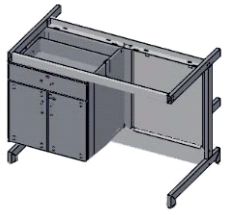
"SLEEK" PP LEG SYSTEM

This Modern looking, PP Leg based plinth system, with Supporting MS Powder Coated Legs at the bottom, along with a PVC Heavy Duty Leveller, looks very elegant. To add to the beauty of this, a frontal PVC Skirting can also be fixed to completely close the floor gap.

CLEANTECH "C" FRAME ADAPTABLE SYSTEM



- Standard heavy duty "C" frame construction - 60 mm x 30 mm x 2 mm thickness.
- 3 projecting Pipe Sections of 60x30 mm on the back making for an obvious Service Stand, and providing full support at 2 levels to all the utility lines running behind the Tables.
- Offered in 2 Height options - Standing Height - 900 mm, Sitting Height - 800 mm
- Storage boxes hanging 180 mm above the ground (in standing height benches) and, 80 mm above the ground (in sitting height benches) keep all the ground clear.
- Load of granite and instruments placed on top is borne by the "C" Frame Skeleton Structure, and storage boxes being hung, keep on functioning smoothly for a much longer duration.
- Option of Suspended Storage Boxes or Boxes with CastorWheels



LAB CASEWORK (MODULAR FURNITURE) COLLINEAR "D" FRAME ADAPTABLE SYSTEM

- Constructed using a 30 mm x 30 mm rectangular pipe of 1.5 mm thickness. Frontal Leg helps in absorbing vibrations
- 3 projecting Pipe Sections of 60x30 mm on the back making for an obvious Service Stand, and providing full support at 2 levels to all the utility lines running behind the Tables.
- Offered in 2 Height options – Standing Height – 900 mm, Sitting Height – 800 mm.

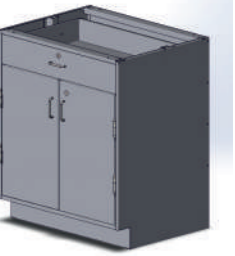


- ▶ Modern 'D' Frame Design
- ▶ Frontal Leg helps preventing any undulation
- ▶ Maximum Vibration absorption
- ▶ Easy to re-align
- ▶ Modular in nature
- ▶ Accessible utility maintenance area
- ▶ Removable back panels



LAB CASEWORK (MODULAR FURNITURE) "ENDURE" PLINTH BASED SYSTEM - SEFA-8M CERTIFIED

- Conventional full height storage cabinets offer maximum storage space
- Body in 1 mm thickness, Shutter, Drawer Front and Plinth in 1.2 mm thickness as standard
- Options of Knuckle Overlay Hinge, Self Closing Hinge and Knuckle Butt Hinge
- Toe Space covered with PVC skirting to close any floor gaps
- Very sturdy, high load bearing capacity the transfers the load directly to the ground
- Once fitted, will keep on serving for a very long time



UNIVERSAL "PEDESTAL" SYSTEM

- Heavy duty MS Welded Under-structure of 30 x 30 mm, 1.6 mm thick Pipe & Angle 1.6 mm, providing full support to the storages and granite.



- Four Legs each only touching the ground under the storages make every-day cleaning an easy task.



- Chemical drop and its splash doesn't affect the storages much as they are above the ground level.

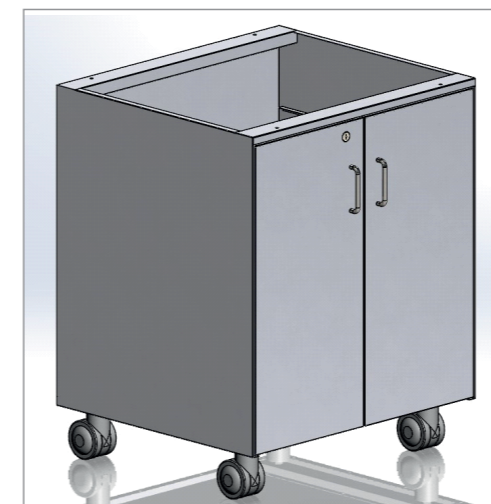
- Available in Standard Standing Height of 900 mm and sitting height of 800 mm.

LAB CASEWORK (MODULAR FURNITURE) CLASP – A LOW COST – YET FULLY FUNCTIONAL SYSTEM FOR SCHOOLS

A Unique Low Cost System, based on Trimmed Depth "C" Frame, developed by the Research Team of Space+ Design Labs, to cater to the requirement of Schools, who aspire to establish a Modern lab but are looking for something that is cost-efficient. It is comparable to any Standard System in terms of Strength, Elegance, Adaptability and Quality.



- Primarily, having all the attributes of "C" Frame System, with the difference of trimmed depth of the "C" Frame and Boxes.
- Storage Space available only in the form of low depth boxes with only shutters and no drawers.

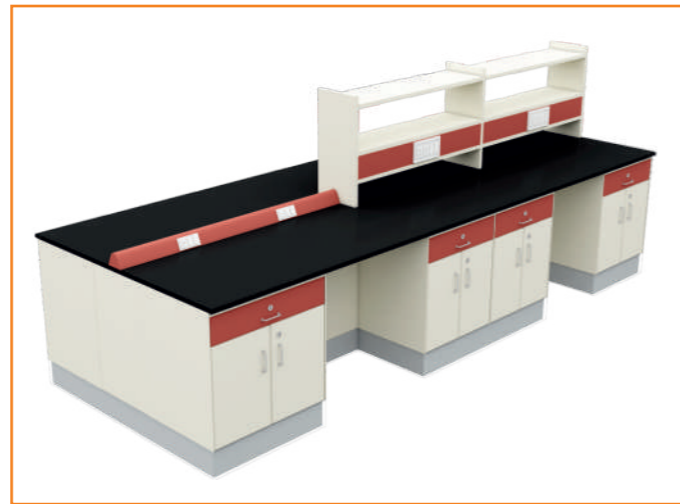


Motive "Mobile Boxes" Adaptable system

This is Motive, can be used with "C" or "D" Frame System, with storages provided on wheels, instead of hung, so that they can be moved anywhere as per utility requirement. Providing a step ahead in terms of flexibility and aesthetic, it really is an innovation combining design & convenience.

SLEEK PLINTH SYSTEM

This Modern looking, Plinth base system, with Supporting MS Powder Coated Legs at the bottom, along with a PVC Heavy Duty Leveller, looks very elegant. To add to the beauty of this, a frontal PVC Skirting can also be fixed to completely close the floor gap. The ease of installation, with more storage space, has kept it a popular option for many years.



- Sleek looking Lab Format where boxes are resting on stand-alone Heavy Duty Legs. Legs are primarily made up of 1.6 mm thick Round Pipe, that provides full support to the storages and granite.
- Maximum Storage space available, as only 150 mm high Leg is beneath the box.
- MS Legs overlap PP Legs which are attached to heavy duty Levelers to take care of all kinds of un-evenness of the floor.

OCTA TABLE - AN INDEPENDENT TABLE THAT COMPLETES ITSELF



The Octa Island Table is an innovative and practical solution for educational environments. It offers a unique blend of functionality and space-saving features, making it ideal for collaborative group work in classrooms or other learning spaces. Some wishful aspects -

Efficient Use of Space: Collaboration and Interaction: With eight students working in tandem, the table fosters a collaborative and interactive learning environment. It encourages students to share ideas, engage in group discussions, and work together on projects and assignments.

Improved Communication: The table's layout allows all students to face each other, making communication and group dynamics more accessible. This design promotes active participation and involvement among students.

Aesthetically Pleasing: The Octa Island Table's unique design and layout contribute to the overall aesthetics of the classroom or learning space. It adds a modern and contemporary touch, enhancing the visual appeal of the environment.

Cost-Effective: While the initial investment in a larger table might be higher than individual desks, the Octa Island Table's space-saving benefits can result in cost savings in the long run. It reduces the need for purchasing and maintaining multiple individual desks.



An excellent solution for fostering collaborative learning and optimizing space in educational settings. Its innovative design can create a conducive learning atmosphere that encourages teamwork, communication, and active engagement among students.



WORK TABLE OPTIONS

Revit
Pictures

Revit
Pictures

Revit
Pictures

Revit
Pictures

Revit
Pictures

Revit
Pictures

Revit
Pictures

Revit
Pictures

FUME HOODS & DUCTABLES

Fume Hoods & Ductables are the products meant for the Protection of Occupants i.e., The Lab Users – The Scientists – The backbone of Scientific Development – from hazardous substances, like harmful gases, fumes, dusts, generated within the Laboratory.



BENCHTOP CAV FUME HOODS –

– For General Purpose –

Bench Mounted Constant Airflow Fume hoods are offered for maximum energy saving and maximum protection. Having a double bypass provision, these fume hoods are best suited in standard applications. Available in External Sizes from L-1200 mm to 2400 mm.



Third Party independently tested and certified for top international standards for laboratory safety and performance –

- **ASHRAE 110-2016:** Adherence to ASHRAE's fume hood performance guidelines for superior fume containment and air quality.
- **EN 14175:** European standard for fume hood safety and performance, for safety and performance standards.
- **SEFA I:** Safety you can trust, adhering to the highest safety and functionality guidelines.
- The above testing and certifications were successfully achieved on the first attempt itself.



WALK-IN AND DISTILLATION FUME HOODS

Space+ Design Labs offers Walk-in and Distillation Hoods that require Large apparatus or complex set-ups to be used inside the Fume Hood.

Available in:

- Vertical Rising Sash
- Horizontal Sliding Sash
- Many options of Inner Lining & Baffles
- Electricals & Utilities as per requirement
- Optional accessories, like – Air Flow Monitor, Soft Touch Control Panel, Temperature Indicator, Fire Extinguisher



OTHER OFFERINGS IN FUME HOODS

Radioisotope Fume Hood

Coved Corners, SS-304 or SS-316 lining to keep interior clean very effortless.

Reinforced countertop to support lead bricks is an integral part of these types of hoods.

Perchloric Acid Fume Hood

Built with a coved SS-304/316 liner with integral work surface, an internal water wash down system for detailed cleaning of the Hood interior.

Interior baffles are easily removable to clean the inner lining for the prevention of dangerous build-up of perchlorates.

Educational / Demo Fume Hood

Featuring front sash and clear windows on both sides of the Fume hood to offer a clear, unobstructed view of the Hood interior.

Pharmacy Fume Hood

Special type Bench Top Constant Air Volume (CAV) Fume Hood without the bottom Chemical Storage Boxes.

Standing on Robust Frame, it offers maximum functionality within a limited budget.



For more in-depth information on Fume Hoods, please ask for our dedicated catalogue for Fume Hoods & Ductables



LOCAL SPOT EXTRACTORS WITH EXHAUST BLOWER

Local Spot Extraction Arm

PERMA arm by
GEOVENT

Inside the laboratory space, generation of fumes, dust & vapors can contaminate the whole laboratory, thereby, placing the users at a very high health risk. Whereas, a Fume hood is capable of capturing all fumes & vapors arising inside the hood, but, for processes taking place outside the Hood, that are producing Fumes, Dust and vapors, a Local Spot Extractor is the answer. It has the versatility of covering a large area with its 360° movements (possible by its multiple swivel joints) above the affected area and uses the exhaust blower to transport the hazardous fumes, vapors etc. outside the Lab.



GEOVENT (Denmark)

Experts within spot extraction in the laboratories, industry, workshops for automobiles, etc., and so on. Geovent keeps focus on efficient extraction solutions, so that the employees of our customers do not get sick from going to work. Geovent helps to find solutions, which are efficient and at the same time sustainable when both energy consumption and efficiency is taken into account.



SPACE PLUS DESIGN INDIA LAB PVT. LTD.

is authorised to sell GEOVENT products in Indian Market.

Specifications & Standard Part of equipment

- Standard Aluminium tube with three moulded plastic joints.
- Aluminium Arm offers sturdiness and smooth flow of fumes.
- Best suitable for use in environments with no special demands for chemical resistance or conductive characteristics.
- Smooth Movement of Joints
- Easily mountable from Ceiling / Wall
- Additional Ceiling Mounting Bracket available in different lengths as per site requirement



PP ACID STORAGEES & METALLIC VENTILATED STORAGEES

Polypropylene (PP) is one of the most common materials used for constructing acid storages. Major advantages include -

- Chemical & Corrosion Resistance.
- Light Weight
- Very Low Maintenance: Due to their resistance to corrosion and chemical damage, PP storages generally require less maintenance compared to metal storages. There's no need for regular corrosion protection measures such as painting or coating, etc.
- Easy Leak Detection: It is easier to detect leaks in PP tanks since they do not corrode and is usually more visible and easier to identify.
- Customization and Flexibility in terms of customization of desired shape and sizes.
- Non-Conductive is advantageous in electrical insulation environments.
- Environmentally Friendly: At the end of their life cycle, PP storages are often easier to recycle compared to many metals.



Stand Alone PP Storages



Under hood PP Cabinets

Metallic Ventilated Chemical Storages

- Four door heavy duty construction (1.2 mm thick powder coated CRCA)
- 4 shelves (one fixed, 3 adjustable) making 5 compartments
- Slots for fresh air entry
- Internal lining of either Phenolic Resin Laminate or PP for chemical protection



Specialty Solvent / Acids & Flammables Storages

We offer a range of Imported Safety Cabinets for Safe, dependable flammable liquid storage and protection. Photos given here are for reference only, however, they may be proprietary to the concerned manufacturer



EXHAUST SYSTEM - ANTICORROSIVE FANS (BLOWERS)

Every ductable in the lab requires anticorrosive fans (blowers). We offer fans made of polypropylene, with high corrosion resistance, making them ideal for extracting corrosive gases in laboratories. We offer high efficiency Quimipol® Spain make Blower Casing and Fans along with Siemens/BBL/CG motor.

For every specific need, a detailed calculation is carried out to ascertain the most optimum capacity of Blower to be chosen that exactly meets the exhaust requirements. An under rated will not exhaust the fumes efficiently thereby bringing the occupants to risk, whereas an over rated will result in much higher Energy Consumption, thereby making financial loss.

Features:

- Made from high-quality polypropylene, offering excellent corrosion resistance.
- Ideal for handling and extracting corrosive gases.

Options:

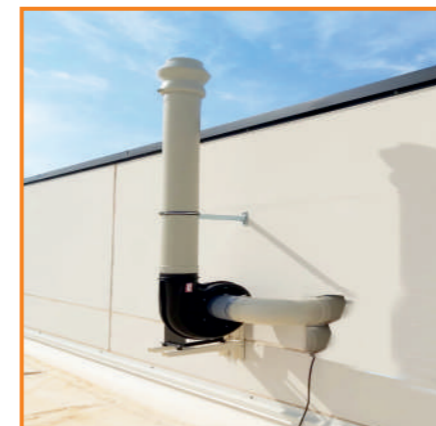
Available in a variety of models, from standard to custom solutions tailored to specific customer needs. Includes three-phase, single-phase, ATEX PP-EL-S, type efficient, and safe blowers.

Compliance:

Meets the most demanding international standards for efficiency and safety.

Durability: Polypropylene construction ensures long-term durability and resistance to corrosive substances.

Efficiency: Designed for optimal performance in extracting and handling corrosive gases.



WORK TOP OPTIONS

Choose the right lab work surface

Material	Appearance / Color	Thickness	Chemical Resistance	Application Areas
Jet-Black Granite (Natural)	Black with some light color grains	18±2 mm	Good resistance to practically all acids, alkalis and solvents. Highly resistant to heat and normal physical abuse.	All Kinds of Labs, except highly corrosive and very high acidic environments
Phenolic Resin Laminate	Hard & Smooth surface, available in many colors – black, silver grey, slate grey, glacier blue, etc.	16 mm and 18 mm	Very Good chemical resistance to wide range of acids, alkalis and solvents	Use wherever a high degree of chemical resistance is required.
Epoxy Resin	Black, smooth non-porous surface	16, 18 and 20 mm thick moulded epoxy resin	Good resistance to practically all acids, alkalis and solvents. Highly resistant to heat.	Use wherever a high degree of chemical resistance is required.
Stainless Steel Grade 304 or 316 as per demand	SS-304 mirror finish	18 mm furnished as standard with 15 mm thick Nylon Padding.	Good chemical resistance to a wide range of reagents	Recommended for sterile and radiological laboratories
Nano Glass	Transparent & Smooth	18 mm thick Glass	Good chemical resistance to a wide range of reagents	Recommended for laboratories not having any heavy weight machinery
Ceramic	Smooth and Glossy	12-18 mm thick Ceramic Surface	Very Good chemical resistance to a wide range of reagents	Use wherever a high degree of chemical resistance is required, but avoid heavy equipment
Hardwood, or Laminated MDF	Natural varnish or with PVC Edge banded	25 mm thick solid edge glued together and finished at high temperature	Fair chemical resistance, but not recommended for use in chemical laboratories	Excellent top material for Physics tables, Electronic benches, and other areas where mechanical or physical work levels are prevalent

POWDER COATING COLOR OPTIONS



SPACE+ DESIGN LABS offers many Powder Coating Color options for secondary color.

Primary Color remains – RAL 9010 (Off White)

SECONDARY COLOR is applied on DRAWER FACIA (AND SHUTTER FACIA, if chosen), FALSE FACIA of SINK Boxes & Corner Boxes, Reagent Facia, Electrical Trunking (Raceways), Overhead Storages' Shutters and Fume Hood Panels

Color Options

Primary Color
For Body

RAL 9010

Secondary Color Choices

For drawers, Reagent Rack Facia, Raceways & Overhead Shutters



**Please ask for Color Swatch from Space+ Design Lab Executive for exact color match

LAB SERVICES SUPPLIES - UTILITIES & ACCESSORIES

Lab Service Supply Modules are essential components in any laboratory setting, designed for streamlined supply of essential services ensuring smooth laboratory operations to meet exacting requirements. These modules are necessary to deliver various services, such as electricity, water, and gases, to the lab workstations.

Key Features of Our Lab Service Supply Modules:

Adaptability:

- Designed to integrate seamlessly with various laboratory setups.
- Can be customized to meet specific laboratory requirements.

Flexibility:

- Modular design allows for easy upgrades and modifications.
- Suitable for different types of laboratory environments and applications.

Versatility:

- Supports a wide range of services, including electrical outlets, water supply, gas connections, and more.
- Ensures reliable delivery of all necessary services to the workstations.

Safety:

- High-quality materials and construction provide safe and reliable service delivery.

REAGENT RACKS

- Flexible Configuration & Adjustable Height
- Available in Lengths - 600 to 1500 mm, Height - 750/900/1200 mm, Shelves depth - Island 300 / 560 mm, Wall Side - 150 / 280 mm
- Collar type / Retainer Rod construction of shelves ensures no toppling of bottles
- Shelf covering options of - Toughened Glass / PP / Phenolic Resin Laminate



STANDARD UPRIGHT 6M CUT-OUT



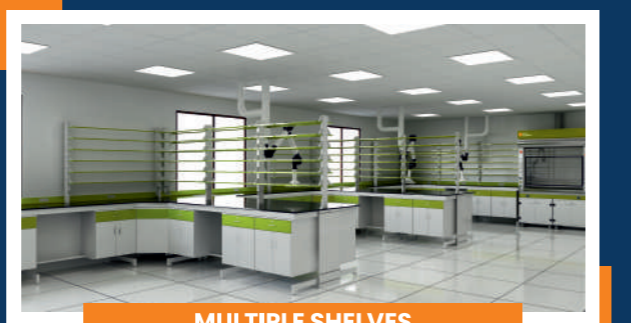
6M CUT-OUT (3 Nos.)



GLASS SHELF



STANDARD 6M



MULTIPLE SHELVES

GAS DISTRIBUTION AND GAS DETECTION SYSTEM

CENTRALIZED GAS DISTRIBUTION

A typical centralized gas distribution is designed based on several parameters including pressure, flow rate, purity, type of controls, sensors and type of material. All the variables are carefully examined especially when it comes to corrosive, flammable and explosive gases. A improper design could result to a compromising situation resulting in unsafe working condition, deviation in the analytical equipment performance, shorter lifespan to equipment, downtime, and a hazard to the laboratory. On offer are - design, fabrication, installation and validation of gas distribution system and integrated engineering solutions for gas distribution systems at plant and laboratory scale.

Space Plus Design Labs offers various types of gas distribution systems

- Multi cylinder manifold system
- Centralized distribution system
- Auto-changeover system
- Auto-shut off system
- Gas lines and Purification Systems to analytical instruments like GC/MS, ICP/MS, LC/MS etc.



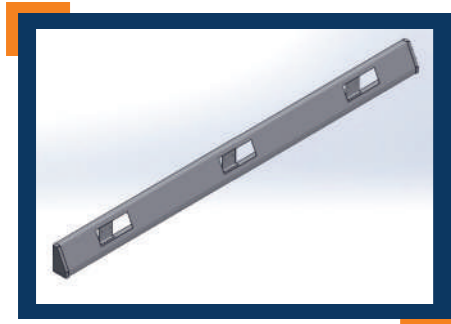
GAS DETECTION SYSTEM

In the realm of industrial safety, the Fixed Gas Detector emerges as a stalwart defender against potential hazards. Employing state-of-the-art sensor technologies, this device offers unparalleled accuracy in detecting and alerting against toxic and combustible gases.

LAB SERVICES SUPPLIES - UTILITIES & ACCESSORIES

Electrical Trunking for Power Supply

Variety of Electrical Trunking options to suit individual requirement



Standard Cut-out - Every 2 M has 3 nos. of 6 Module Cut-out



Same as standard but one LAN cut in centre



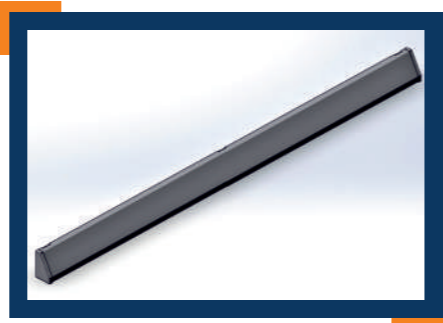
Industrial raceway with Incl. Sockets & MCB cut



Economical Cut-out - Every 2 M has 2 nos. of 3 Module Cut-out



Double Decker Raceway with Industrial as well as LAN cut-out



Blank Raceway without cut

Sinks and Faucets

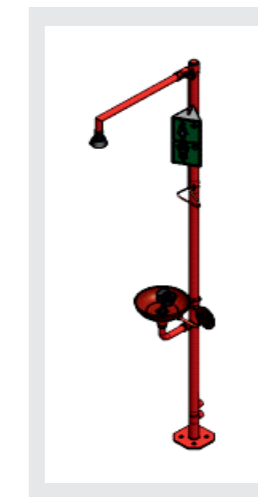
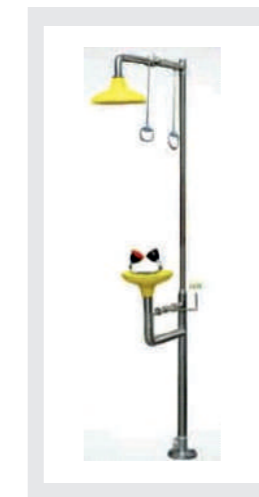
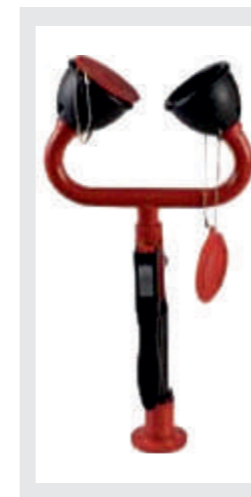


LAB SERVICES SUPPLIES - UTILITIES & ACCESSORIES

Valves & Safety Showers

Wide variety of options and for various applications

Safety First and the foremost. When it comes to the safety of the Lab personnel, Table Mounted Eye Wash Station or an independent Safety Shower with integrated Eye Wash are the perfect choices to take care of their safety aspects. We offer variety options, sourced from : India or BROEN® (Denmark) / "FAR"® Italy / Novalab® Germany



Splash Guards

For Hygiene & Safety, Splash Backs are offered in Lab Counter's Edge Washing Area, to avoid splashes on the rest of the Lab Bench, ensuring safety of nearby equipment

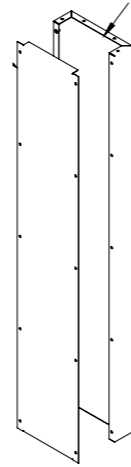


Photos given here are for reference only, however, they may be proprietary to the concerned manufacturer

LAB SERVICES SUPPLIES - UTILITIES & ACCESSORIES

Service Droppers

Service Droppers, or "SERVICE SPINE", to carry services onto the Island Benches and Peninsular Lab Benches

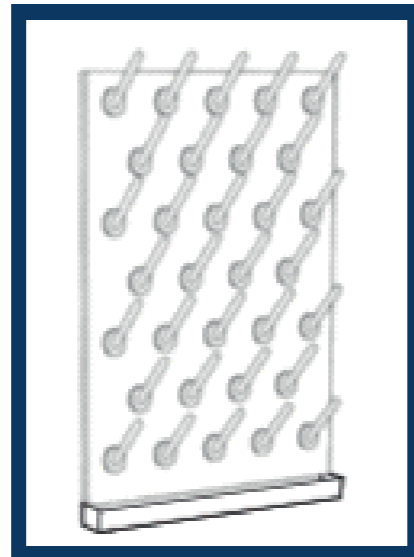


Peg Boards

Pegboards or Drying Racks, offered in a variety of materials – like SS / Acrylic / Fully Moulded PP / Phenolic Resin and the pegs are also easily removable for cleaning purpose.



S.S. Peg Board
With Adjustable Pegs



PRL Peg Board



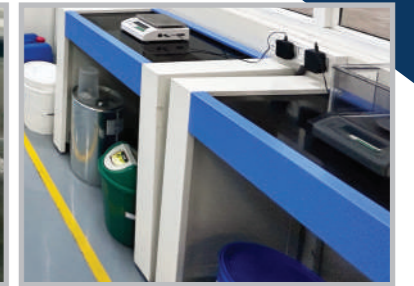
Acrylic Peg Board

LAB UTILITIES, ESSENTIALS & ACCESSORIES

Anti Vibration Tables (AVTs)

Anti Vibration Tables, with Rational Axis Mountings and Isolation Pads.

Available in Various Sizes from 1200 x 900 mm, 900 x 900 mm, 900 x 600 mm and 600 x 600 mm, 1800 x 900 mm, 3000 x 600 mm and 900 x 750 mm.



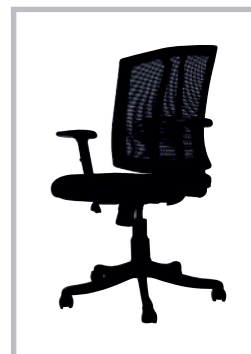
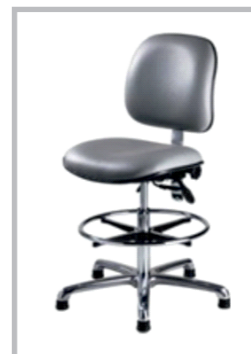
Cross-Over Benches

Entry barrier Cross-Benches for all Labs to differentiate between two clean zones of a Lab as a change area.



Lab Stools & Chairs

A lot of documentation is an integral part of a Lab Working. Long Hours working demands for a comfortable chair with high rising mechanism to ensure restriction-free instruments use and related documentation.



STORAGES OPTIONS

OFFICE STEEL SHUTTER ALMIRAH

- Auto Closing Hettich hinges • Spring Loaded Chrome Plates Handle-cum-lock
- Adjustable Shelves with double clamping for rigidity

- SDA-001** H-1980 x W-910 x D-480 mm (4 shelves, making 5 compartments)
- SDA-002** H-2000 x W-950 x D-550 mm (4 shelves, Making 5 compartments)
- SDA-003** H-1200 x W-910 x D-450 mm (2 shelves, making 3 compartments)
- SDA-004** H-1200 x W-750 x D-450 mm (2 shelves, making 3 compartments)
- SDA-005** H-1980 x W-910 x D-480 mm (With Plinth) (4 Shelves)
- SDA-006** H-1980 x W-1023 x D-480 mm (With Plinth) (4 Shelves)
- SDA-007** H-2100 x W-915 x D-480 mm (4 Shelves with concealed plinth)
- SDA-008** H-1250 x W-915 x D-480 mm (2 Shelves with concealed plinth)
- SDA-009** H-1700 x W-830 x D-500 mm (4 Shelves with concealed plinth)



LAB / LIBRARY GENERAL PURPOSE ALMIRAH WITH FLOATING GLASS

- Auto Closing Hettich hinges
- Spring Loaded Chrome Plates Handle-cum-lock
- Adjustable Shelves with double clamping for rigidity

- SDA-011** H-1980 x W-910 x D-480 mm (4 shelves, making 5 compartments)
- SDA-012** H-1500 x W-1000 x D-450 mm (3 shelves, Making 4 compartments)
- SDA-013** H-1200 x W-910 x D-450 mm (3 shelves, making 4 compartments)
- SDA-014** H-1980 x W-1000 x D-480 mm (4 shelves, making 5 compartments)
- SDA-015** H-2600 x W-1000 x D-450 mm (Plinth Based, Multi shelves Storage).



SLIDING DOOR ALMIRAH WITH OR WITHOUT FLOATING GLASS SHUTTERS

- Very smooth Sliding Mechanism • Cylinder Lock • Top Mounted Rollers for smooth functioning

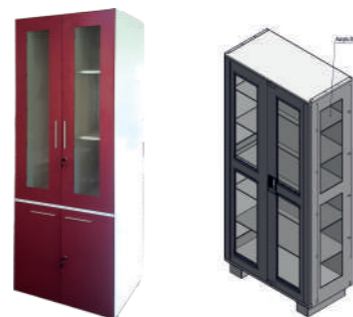
- SDA-031** H-1950 x W-910 x D-480 mm – Steel Shutters (4 shelves, making 5 compartments)
- SDA-032** H-1200 x W-1200 x D-450 mm – Steel Shutters (2 shelves, making 3 compartments)
- SDA-033** H-1950 x W-910 x D-480 mm – Floating Glass Shutters (4 shelves, making 5 compartments)
- SDA-034** H-1200 x W-1200 x D-450 mm – Floating Glass Shutters (2 shelves, making 3 compartments)



APRON HOLDER ALMIRAH & INSTRUMENT CABINET

- Auto Closing Hettich hinges
- Spring Loaded Chrome Plates Handle-cum-lock
- Adjustable Shelves with double clamping for rigidity

- SDA-041** H-1980 x W-910 x D-560 mm (2 shelves, 1 Hanging Rod)
- SDA-042** H-1990 x W-900 x D-450 mm (Instrument Cabinet with transparent doors & Sides)



LOCKERS, FILING CABINETS AND BOOK CASES

Locker Cabinets: Overall Standard Size –H-1980xW-910xD- 480 mm

- SDA-081** 6 lockers with Pad Lock / Cam Lock,
- SDA-082** 6 lockers vertical with Pad Lock / Cam Lock
- SDA-083** 8 lockers with Pad Lock / Cam Lock
- SDA-084** 12 lockers vertical with Pad Lock / Cam Lock
- SDA-085** 18 lockers vertical with Pad Lock / Cam Lock



SINGLE UNIT VERTICAL LOCKER

CABINET: OVERALL SIZE – H-1855 X W-380 X D-485 MM
(All lockers available with CAM Lock – standard, otherwise PAD Lock & Numeric Key Lock also available)

- SDA-091** Single Locker of Size (inner) 1805x380x445 with or without hanger rod
- SDA-092** 2 Lockers of Size (inner) 900x380x445 with or without hanger rod
- SDA-093** 3 lockers of Size (inner) 600x380x445 mm
- SDA-094** 4 lockers of Size (inner) 450x380x445 mm
- SDA-095** 6 lockers of Size (inner) 300x380x445



VERTICAL FILING CABINETS

with Hettich Telescopic Channels & Single Lock, Anti-Tilt Mechanism

- SDA-101** 4 Drawers – H-1330 x W-464 x D-600 mm
- SDA-102** 3 Drawers – H-1025 x W-464 x D-600 mm
- SDA-103** 2 Drawers – H-720 x W-464 x D-600 mm
- Lateral SDA 105** 4 Drawers H-1330 x W-900 x D-600 mm
- Lateral SDA 106** 3 Drawers H-900 x W-900 x D-450 mm
- Lateral SDA 107** 2 Drawers H-750 x W-900 x D-600 mm



BOOK CASE WITH GLASS WITH 4 DOORS HAVING SCISSOR MECHANISM

- SDA-111** 4 Shelves – H-1745 x W-915 x D-325 mm

MULTI PURPOSE DRAWERS

with Hettich Telescopic Channels & Single Lock,

- SDA-141** 6 Drawers – L-1365 x D-950 x H-870 mm
- SDA-142** 3 Drawers – L-450 x D-500 x H-700 mm
- SDA-143** 3 Drawers – L-450 x D-400 x H-575 mm
- SDA-144** 3 Drawers – L-300 x D-400 x H-675 mm
- SDA-145** 3 Drawers – L-400 x D-475 x H-600 mm
- SDA-146** 4 Drawers – L-600 x D-530 x H-635 mm



ANGLE RACKS (OPEN/CLOSE) WITH ADJUSTABLE/FIXED TYPE SHELVES

- SDA-121 (Open) / SDI-131 (Closed)** H-2100 x W-1000 x D-450 mm, 6 shelves, making 5 compartments
- SDA-122 (Open) / SDI-132 (Closed)** H-2400 x W-1000 x D-450 mm, 7 shelves, making 6 compartments
- SDA-123 (Open) / SDI-133 (Closed)** H-2100 x W-900 x D-400 mm, 6 shelves, making 5 compartments
- SDA-124 (Open) / SDI-134 (Closed)** H-2400 x W-900 x D-400 mm, 7 shelves, making 6 compartments
- SDA-125 (Open) / SDI-135 (Closed)** H-2100 x W-900 x D-300 mm, 8 shelves, making 7 compartments
- SDA-126 (Open) / SDI-136 (Closed)** H-1200 x W-900 x D-300 mm, 4 shelves, making 3 compartments
- SDA-127 (Open) / SDI-137 (Closed)** H-2400 x W-915 x D-450 mm, 5 shelves, making 4 compartments
- SDA-128 (Open) / SDI-138 (Closed)** H-1800 x W-900 x D-450 mm, 5 shelves, making 4 compartments



LIBRARY | LAB STORAGE RACKS

End Covered with powder coated CRCA sheet / 18 mm edge banded PLPB.

SDLR-001: Single Sided Library Racks:

L-1800 x W-925 x D-300 mm with 4 nos. of adjustable shelves

SDLR-002: Single Sided Library Racks:

L-2130 x W-915 x D-385 mm with 4 nos. of adjustable shelves

SDLR-003: Single Sided Library Racks:

L-1200 x W-915 x D-385 mm with 2 nos. of adjustable shelves

SDLR-004: Double Sided Library Racks:

L-2100 x W-940 x D-600/688 mm with 4 nos. adjustable shelves

SDLR-005: Double Sided Library Racks:

L-1880 x W-1884 x D-700 mm with 4 nos. adjustable shelves

SDLR-006: Double Sided Library Racks:

L-2130 x W-915 x D-715 mm with 5 nos. adjustable shelves

SDLR-007: Double Sided Library Racks:

L-1200 x W-915 x D-715 mm with 5 nos. adjustable shelves

SDLR-008: Single Sided Double Width Library Racks:

L-1890 x W-1825 x D-300 mm with 5 nos. adjustable shelves



EXPANDABLE RACKS

SDLR-010: Double Sided Extendable Library Racks (Upright Type)

Main - L-2240 mm x W-900 x D-715 mm with 6 Nos. adjustable shelves.

SDLR-011: Double Sided Extendable Library Racks (Upright Type)

Add-On - L-2240 mm x W-900 x D-715 mm with 6 Nos. adjustable shelves.

SDLR-012: Single Sided Extendable Library Racks (Upright Type)

Main - L-1800 mm x W-900 x D-385 mm with 4 Nos. adjustable shelves.

SDLR-013: Single Sided Extendable Library Racks (Upright Type)

Add-On - L-1800 mm x W-900 x D-385 mm with 4 Nos. adjustable shelves.



COMPACT STORAGE SYSTEM (MOBILE STORAGE SYSTEM / OPTIMIZER)

Mechanical Drive, 100% Epoxy Powder Coated with Label Holder, Stopper Lock, 4 Nos. Adjustable Shelves making 5 compartments, Single Key Locking System with Overall Height of 2080 mm / 2400 mm, Width 910 mm / 1200 mm. and Depth 455 mm / 382 mm.

Door option is also available in all configurations

Heights Available : - 2080 mm or 2400 mm (with carriage)

Length 910 or 1200 mm, W-455 or 381 mm

SINGLE BAY CONFIGURATION

1 Bay Single Unit : Static

W-910 or 1200 x D-455 or 381 mm

1 Bay Single Unit : Movable

W-910 or 1200 x D-455 or 381 mm

1 Bay Double Unit : Movable

W-910 or 1200 x D-910 or 762 mm

TWO BAY CONFIGURATION

2 Bay Single Unit : Static

W-1820 or 2400 x D-455 or 381 mm

2 Bay Single Unit : Movable

W-1820 or 2400 x D-455 or 381 mm

2 Bay Double Unit : Movable

W-1820 or 2400 x D-910 or 762 mm



THREE BAY CONFIGURATION

3 Bay Single Unit - Static

W-2730 or 3600 x D-455 or 381 mm

3 Bay Single Unit - Movable

W-2730 or 3600 x D-455 or 381 mm

3 Bay Double Unit - Movable

W-2730 or 3600 x D-910 or 762 mm

FOUR BAY CONFIGURATION (Available only in L-910 mm)

4 Bay Single Unit : Static

W-3640 x D-455 or 381 mm

4 Bay Single Unit : Movable

W-3640 x D-455 or 381 mm

4 Bay Double Unit : Movable

W-3640 x D-910 mm or 762 mm

WE SERVE...

PHARMA, CHEMICAL AND PETRO CHEMICAL



FMCG, FOOD, HEAVY AND PROCESSED INDUSTRY



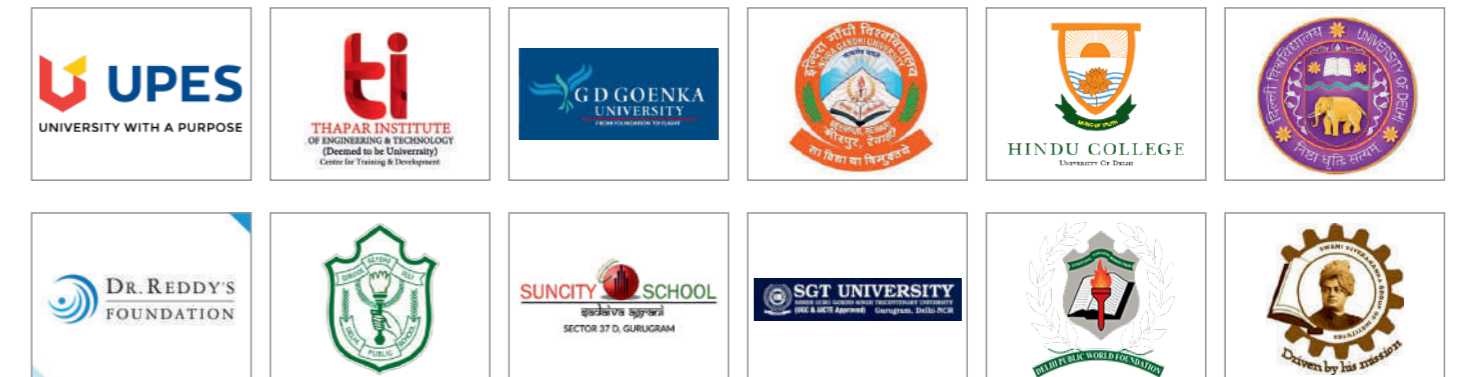
MEDICAL COLLEGES



RESEARCH INSTITUTES



EDUCATIONAL INSTITUTES



GALLERY



GALLERY

